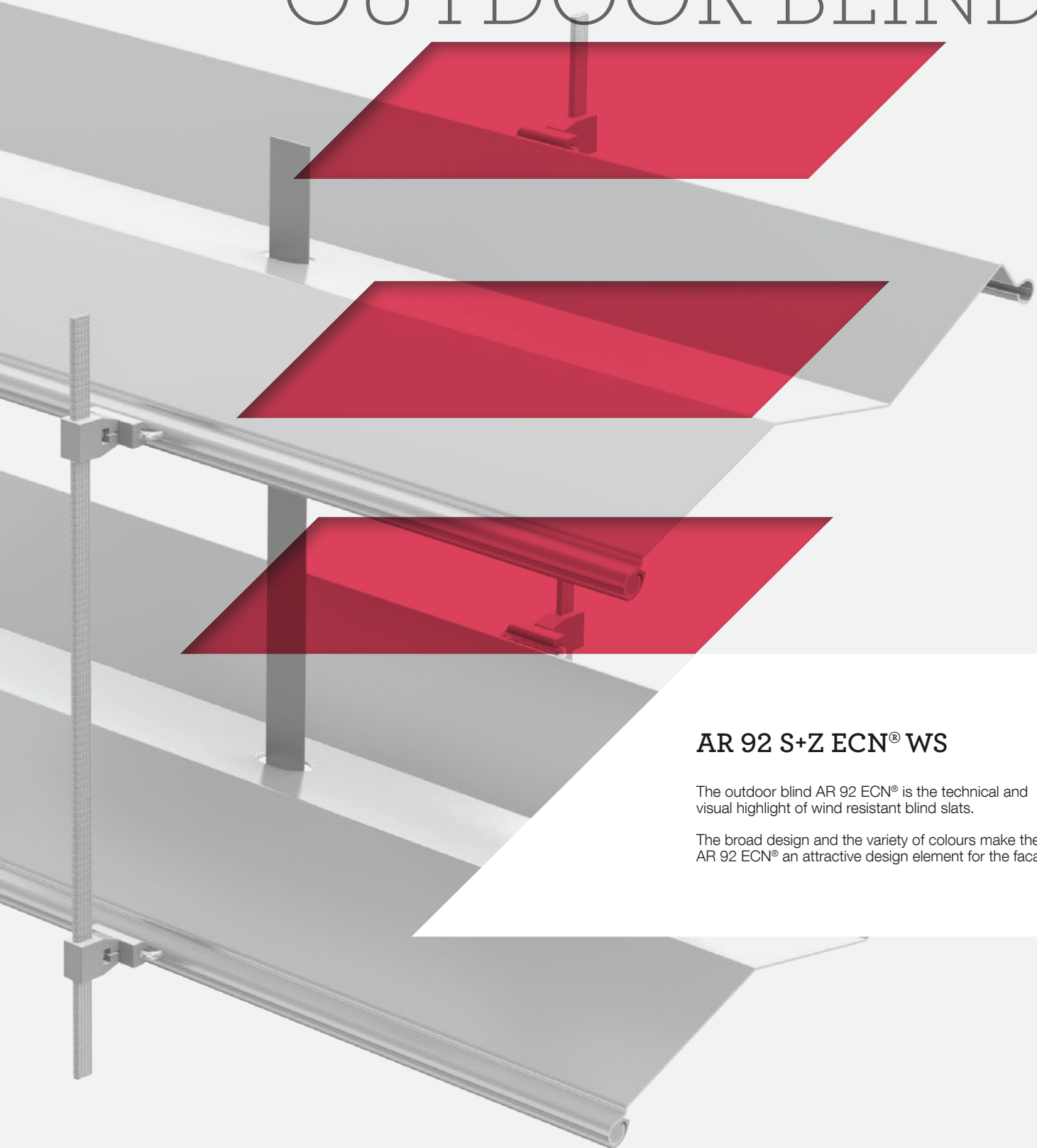


HELLA

OUTDOOR BLINDS



AR 92 S+Z ECN® WS

The outdoor blind AR 92 ECN® is the technical and visual highlight of wind resistant blind slats.

The broad design and the variety of colours make the AR 92 ECN® an attractive design element for the facade.

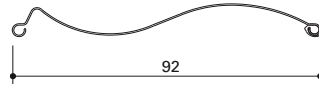
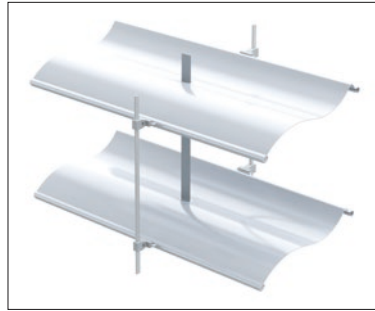
It is a real "all-rounder" and ensures optimum indoor climate.

Heat protection due to reflection of the sunlight in front of the facade, control of the incoming light up to excellent blacking out via adjustable slats, protection against bad weather due to the possibility to close the slat system completely.

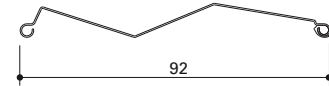
And to avoid annoying noise, the slats are guided in guide rails that are provided with plastic inserts.

Product design

- Bottom rails weighted
- Wire cable with spring in the top rail
- Cable holder provided at the guide rail
- Not provided with a simultaneously tilting bottom rail



**The original S-shaped slat,
only available from HELLA:**
Elegant soft wave contour and
perfect light control towards the inside



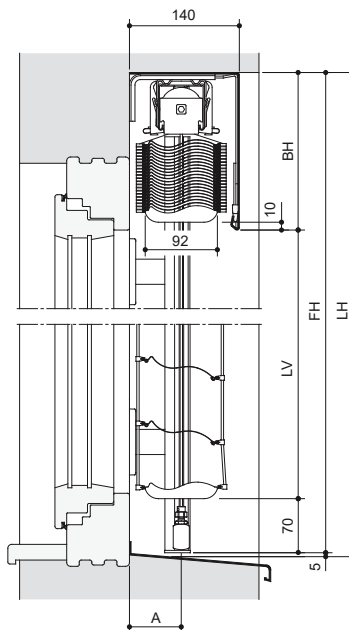
The Z-shaped slat:
Light control
with modern geometric shape

Installation examples

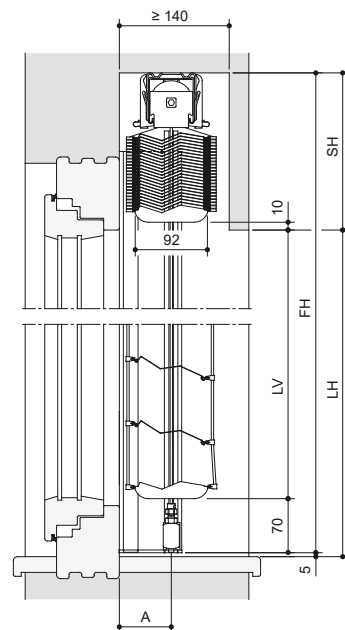


Wind resistant design

The wind resistant design allows the use in wind speeds of up to 80 km/h (acc. to 13659) depending on the unit size. In addition to the guide rails, the slats are guided by at least two polyamide-sheathed high-grade steel wires. The tensioning brackets for the two outer wind protection devices are integral parts of the guide rail.



AR 92 ECN® WS
Top board - guide rail



AR 92 ECN® WS
Recess - guide rail

Complete height [mm]	1000	1500	2000	2500	3000	3500	4000
Package height [mm]	150	180	205	230	260	290	320

Slat width [mm]	92	Slat type	Bordered
Side guidance	Guide rail	Max. height [mm]	4000
Min. width [mm]	530 (motor)	Max. width [mm] single unit	4000
Max. blind surface [m²] single unit	9	Max. blind surface [m²] linked units	17.5